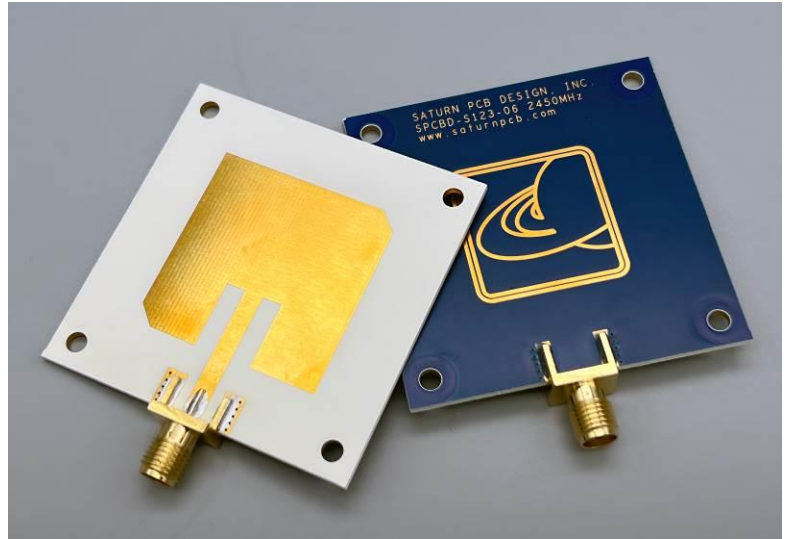


2.45GHz Patch Antenna Part Number: SPCBD-S123-06

Features

- 2.45GHz Center Frequency
- 50 Ohm Impedance
- VSWR: 1.04
- Return Loss: -36dB
- Bandwidth: 36MHz
- Single Patch Design
- *Vertical Polarization
- SMA Connector
- RoHS Compliant
- Rogers substrate
- Operating Temperature:
-65°C to 165°C



Product Link:

<https://saturnpcb.com/2-45ghz-patch-antenna/>

Applications

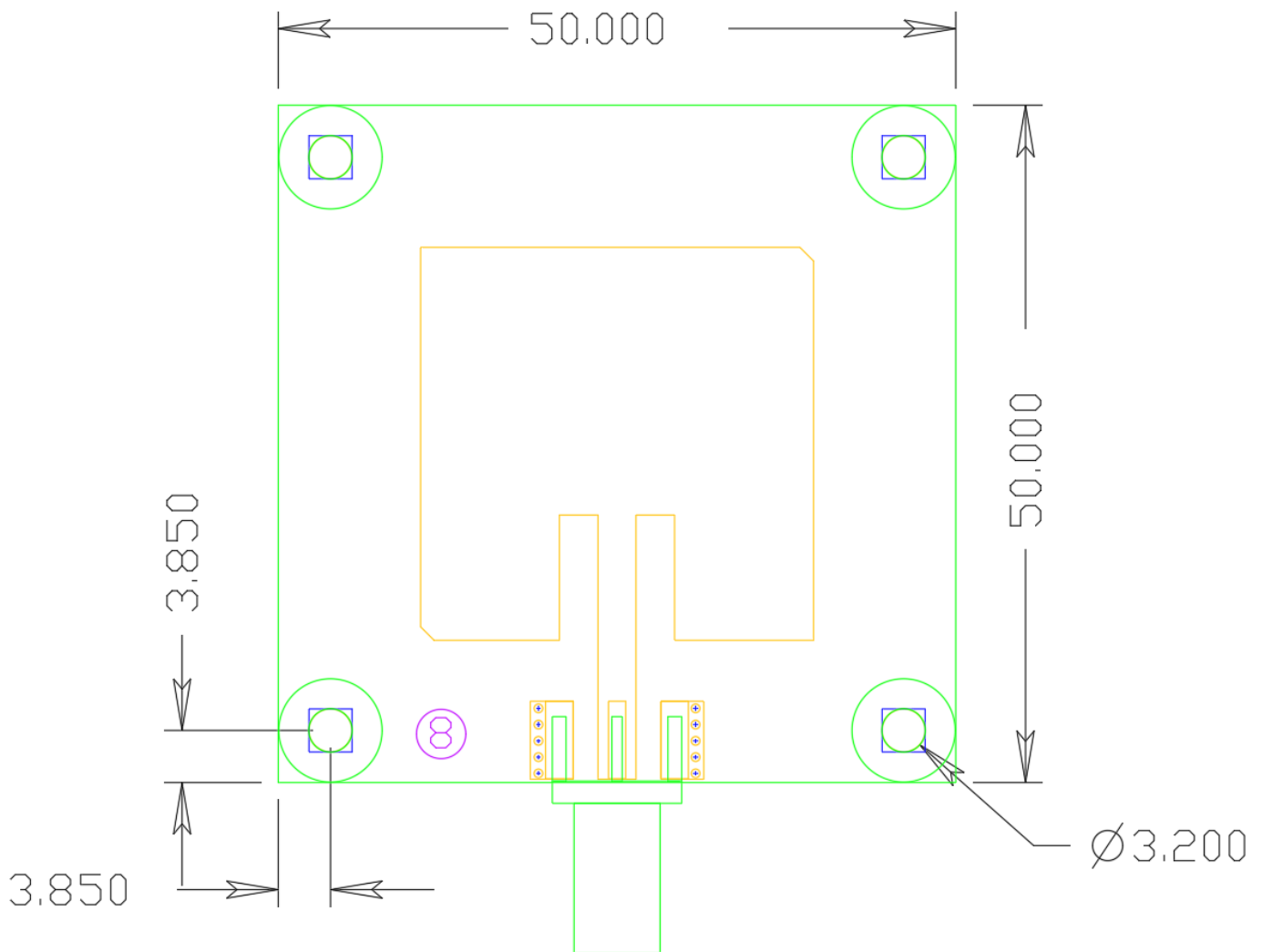
- ISM Band radios
- 802.15.4, Bluetooth, WiFi

Description

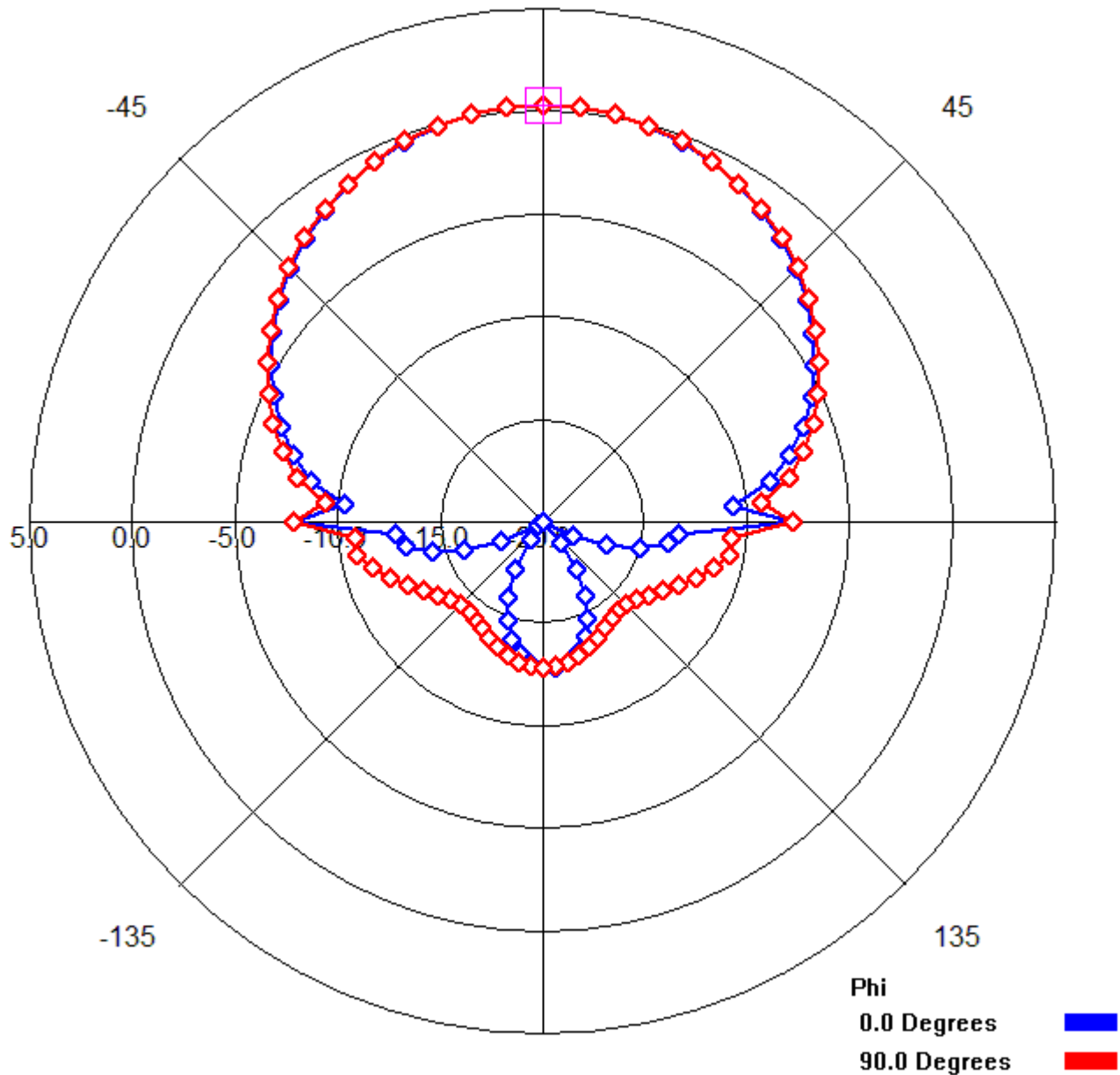
- The SPCBD-S123-06 is a low-cost solution for ISM band applications as well as 802.15.4, Bluetooth & WiFi applications that require a high-performance antenna. It utilizes a single patch design with a 2.45GHz center frequency and is manufactured using high temperature FR-4 for durability in extreme conditions.

Dimensions

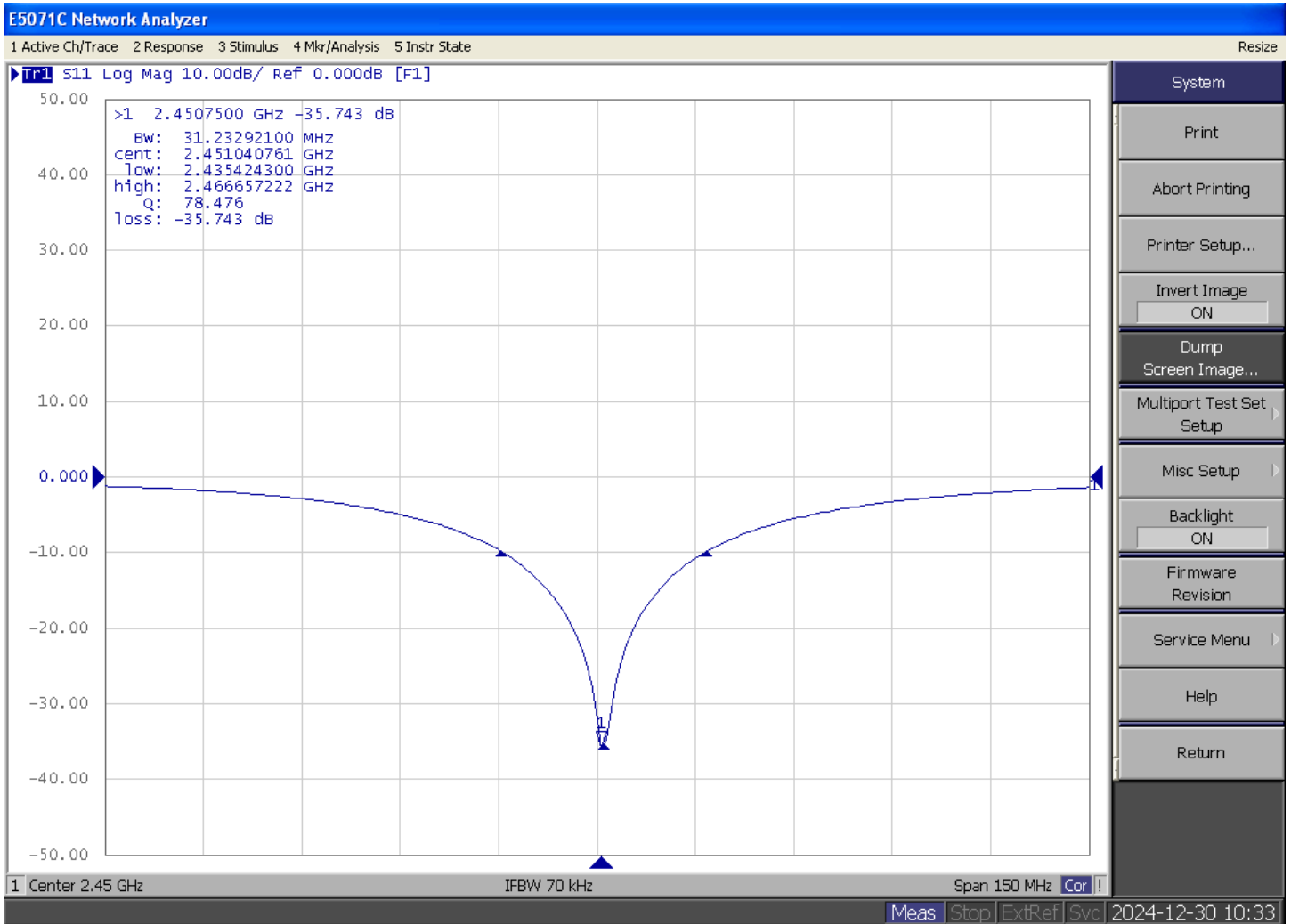
L•W•H: 50mm x 50mm x 1.6mm"



Radiation Pattern (estimated based off of previous antennas)



Patch Antenna Measurement



*Two corners of the antenna have been cut to induce circular polarization.